

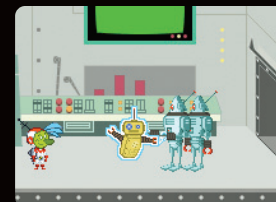
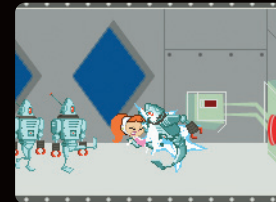
## ATOMIC BETTY™

1pm: Battle evil across the galaxy. 2pm: Algebra quiz.

To her classmates, Betty seems like a typical suburban girl, but to villains across the galaxy, she is the fearless Atomic Betty, Galactic Guardian and Defender of the Cosmos. At the most awkward times, Betty is called into action to battle the diabolical Maximus I.Q. Will she be able to soar across the universe in time to thwart Maximus and his minions? Will she be able to stop that stuck-up rich girl Penelope from ruining her good name and still sneak back to class before the bell rings? Find out in this action-packed, pick-up-and-play adventure.

### FEATURES:

- **Enjoy retro-cool visuals and quirky characters** based on Teletoon and Cartoon Network's hit series.
- **Have fun with all your favorite characters** including Betty, Sparky, X-5, Maximus Minimus, Noah, Paloma and Purrsy.
- **Choose from many playable characters** Betty, Sparky, X-5, Noah, Paloma. Play with three at the same time!
- **Defeat the evil Maximus** across the galaxy with an arsenal of gadgets and skills: incapacitating kung fu attacks, running slide, grappling hook, jet pack and more.
- **Hurtle through the cosmos** from the cockpit of Betty's Hyper-Galactic Star Cruiser. Blast through any asteroids or baddies that get in your way.



CONTACT: **SEAN MYLETT**

(408) 235-2131  
Smylett@namco.com

**Publisher:** Namco Hometek Inc.  
**Developer:** Breakthrough New Media / Big Blue Bubble  
**Release Date:** November 2005  
**ESRB:** RP (E expected)  
**Genre:** Platformer  
**Multiplayer:** 1 Player

**Platform:** Game Boy® Advance  
**UPC:** 722674500159  
**Stock #:** 50015  
**URL:** [www.namco.com](http://www.namco.com)



Visit [www.esrb.org](http://www.esrb.org) for updated rating information.



**GAME BOY ADVANCE**

ATOMIC BETTY™ is a trademark of Atomic Cartoons Inc. and Breakthrough Entertainment Inc. in the United States and other countries. Game program © 2005 Namco Hometek, Inc. TM, ® and Game Boy Advance are trademarks of Nintendo. © 2001 Nintendo. The ratings icon is a trademark of the Entertainment Software Association. All other trademarks belong to their respective owners.